



Iflow Printer Software

Introduction

The IFLOW Printer software is a Windows based software for 32 or 64 bit flavours of Windows. It enables you to **fax** from any Windows software application using the IFLOW fax service.

Prerequisites

PC running Windows XP or Windows 7

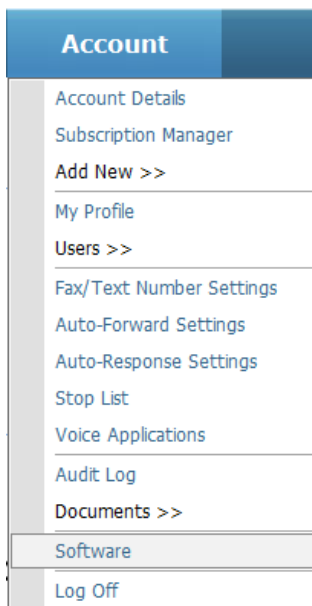
Microsoft .NET Framework version 4 or higher

Note: Older applications that do not use EMF format for printing may not work. In this case consider using IFLOW's email to fax gateway.

Installation

Visit the Software section on IFLOW

- Go to the IFLOW web site – <http://www.iflow.net>
- Log on to your account using your User ID and Password
- Click on the ACCOUNTS menu and choose SOFTWARE





32 bit or 64 bit

Your Windows PC is either using 32 bit or 64 bit hardware. It is necessary to determine which one in order to download the correct software version. There is a link for both version on the IFLOW software page.

Microsoft .NET Framework 4

IFLOW Printer was developed to use .NET Framework version 4. .NET Framework is a Microsoft platform designed for Windows. Both Vista and Windows 7 comes preloaded with a version of the framework.

If you do not have version 4 it will be necessary to install this first. On the IFLOW Software page there are 2 downloads of interest:

frameworkChecker

This is a simple utility that you can download and run that will determine the version of .NET on your machine.

.NET Framework Installer

This is Microsoft's installer for .NET framework 4.0 which can also be found on Microsoft's website.

Download and Install

When you have ensured the PC is running the correct framework and have determined the hardware type click on the DOWNLOAD NOW link for the IFLOW Printer 32 bit or 64 bit. Once downloaded run the software. You will be guided through the installation process. Simply click NEXT on each screen to get through the steps.

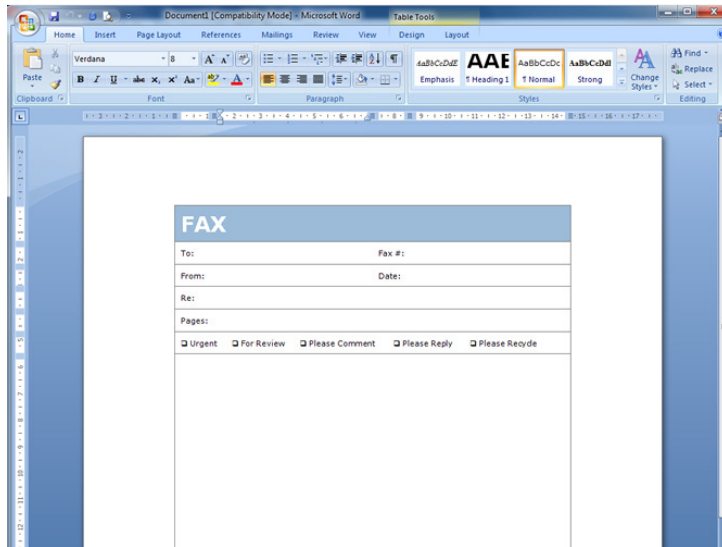
Once complete you will have a new printer called IFLOW PRINTER on your PC.



Sending a fax

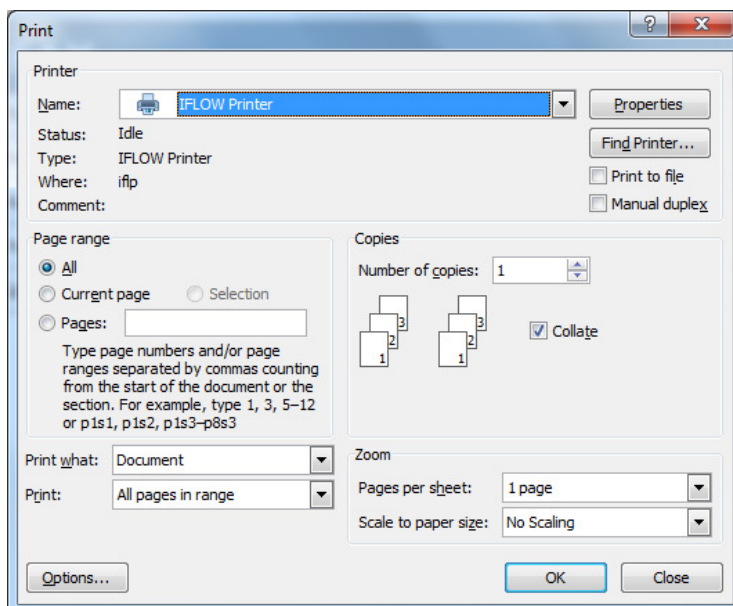
Open your document

Open the Windows application that will produce the fax document. Usually any application that can print a document will be able to fax it too.



Print the document

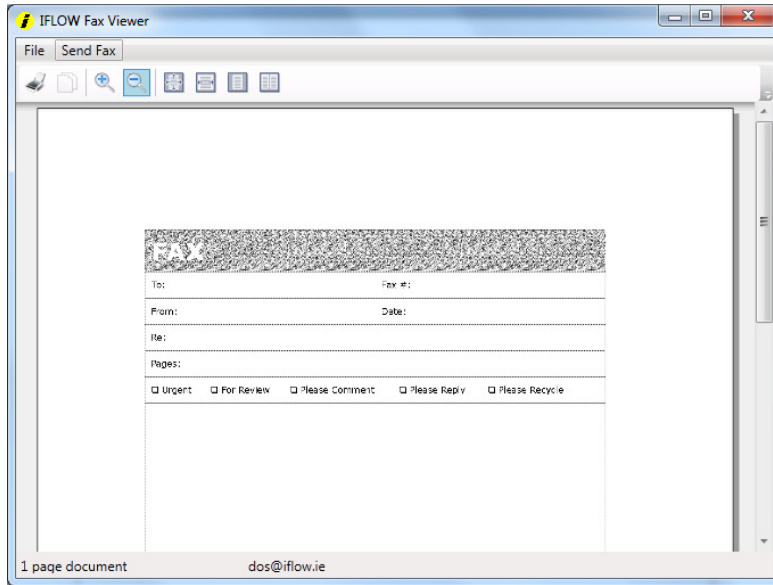
Go through the process of printing your document ensuring you change the selected printer to IFLOW Printer.





Preview the fax

Once 'printed' the IFLOW software appears with a preview of your fax document. Review the preview and select Send Fax to proceed.



Address and Send the Fax

Finally, enter one or more destination fax numbers in the Fax Number box provided – click the ADD button after entering each one.

Alternatively, if you have contacts stored on your IFLOW Account you can highlight the contacts and click the ADD CONTACT button or, if organized in to groups, select the Contact Group in the drop-down box and click the ADD GROUP button.

When all the fax numbers you want to contact are showing in the right-hand box click the SEND button.

